

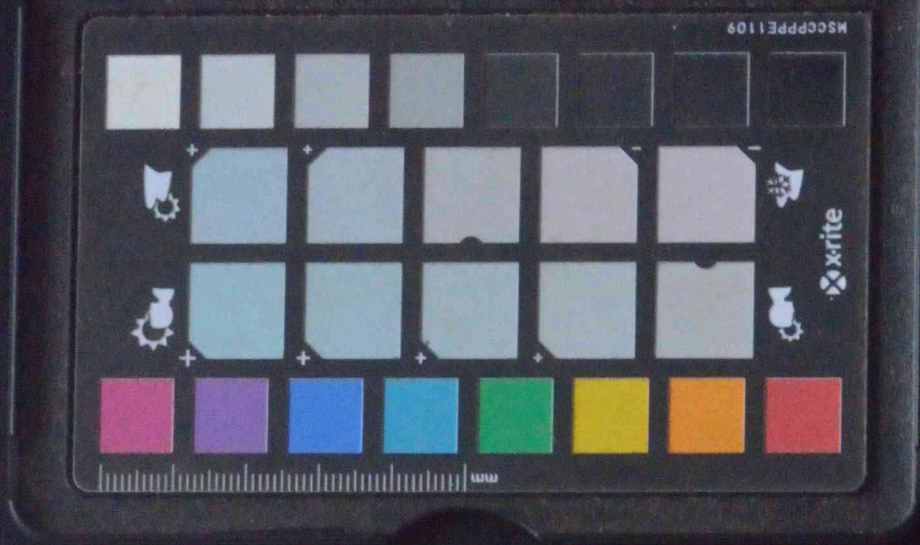
Received from the Transport Ship "Edward" being

No.	Name.	Sex.	Age.	Stations.	Description.
22.240	Effem Cook	Man	10 5 4	4	Cub on both Temples
		"	17 5 5	5	D° " D°
22.250	Owmoh	"	18 5	2	Cub on temples & forehead
	Bennoh	"	10 5 1	1	D° D° D°
	Ollooh	"	17 5 0	0	D° D° 5
	Obassch	"	18 5 4	4	Cub on Temples
	Edoumah	"	21 4 9	9	D° D°
22.255	Abassch	"	10 5 0	0	D° D°
	Spinineuf	"	10 5 7	7	D° D°
	Owuch	"	22 5	7	Roomarks on Temples
	Yauo	"	22 5	2	Cub on Temples
	Elahbat	"	19 5 0	0	Cub all over
22.260	Agban	"	17 5 8	8	Do on Temples
	Obassch	"	21 5 0	0	5° D°
	Bendoh	"	30 5 0	0	large scars on l. arm
	Aggahdek	"	10 5	2	Tatt° on Temples
	Robert Puto	Boy	13 5	2	Cub on Temples
22.268	Robins	"	10 4 8	8	D° D°
	John Thomas	"	11 4 9	9	D° on Temples
	Abel Jones	"	8 4 4	4	D° D°
	John Goodwin	"	9 5 5	5	D° D°
	Edw Hudson	"	9 4 2	2	No marks
22.270	Matthews Spencer	"	14 4 0	0	D°
	John Skinner	"	12 4 4	4	Cub on Temples
	Peter Horton	"	9 4 3	3	Cub on temples & larger on upper lip

at Cape Coast on the ...

No.	Name.	Sex.	Age.	Stations.	Description.
	John Johnstone	Boy	8	4.2	but on temples
	O. G. ooloo	Girl	12	4.7	No marks
22.285	Wahcok	"	7	4.7	but on temples
	Engyah	"	12	4.6	D° D°
	Ho cutah	"	8	4.2	D° D°
	Bahyah	"	7	4.7	No marks
	Wubbisarah	"	11	4.6	but on temples
22.28	Sansigimah	"	8	4.6	No marks
	Keboah	"	6	4.2	D° D°
22.282	Hannah Decker	"	7	4.2	but on temples and left arm





In what Ship or where Seized.	Date of Delivery.	Date of Condemnation.	In what Court Condemned.	In what cause Condemned,	At whose suit Condemned.
-------------------------------------	-------------------------	--------------------------	-----------------------------	-----------------------------	-----------------------------

